

OSTSEE MARINE

DOORS & HATCHES

Turnkey Shell Door Technologies

Mechanical Integration for High-Spec Vessel Applications

- Ostsee Marine Solutions
Stralsund, Germany
- Andreas Wagner
General Manager



Introduction & Context

- Modern vessels = higher complexity, tighter schedules
- Shell doors = critical for safety, watertight integrity & luxury functions
- Challenge: multiple suppliers, many interfaces -> higher risk



OMS Expertise (1)

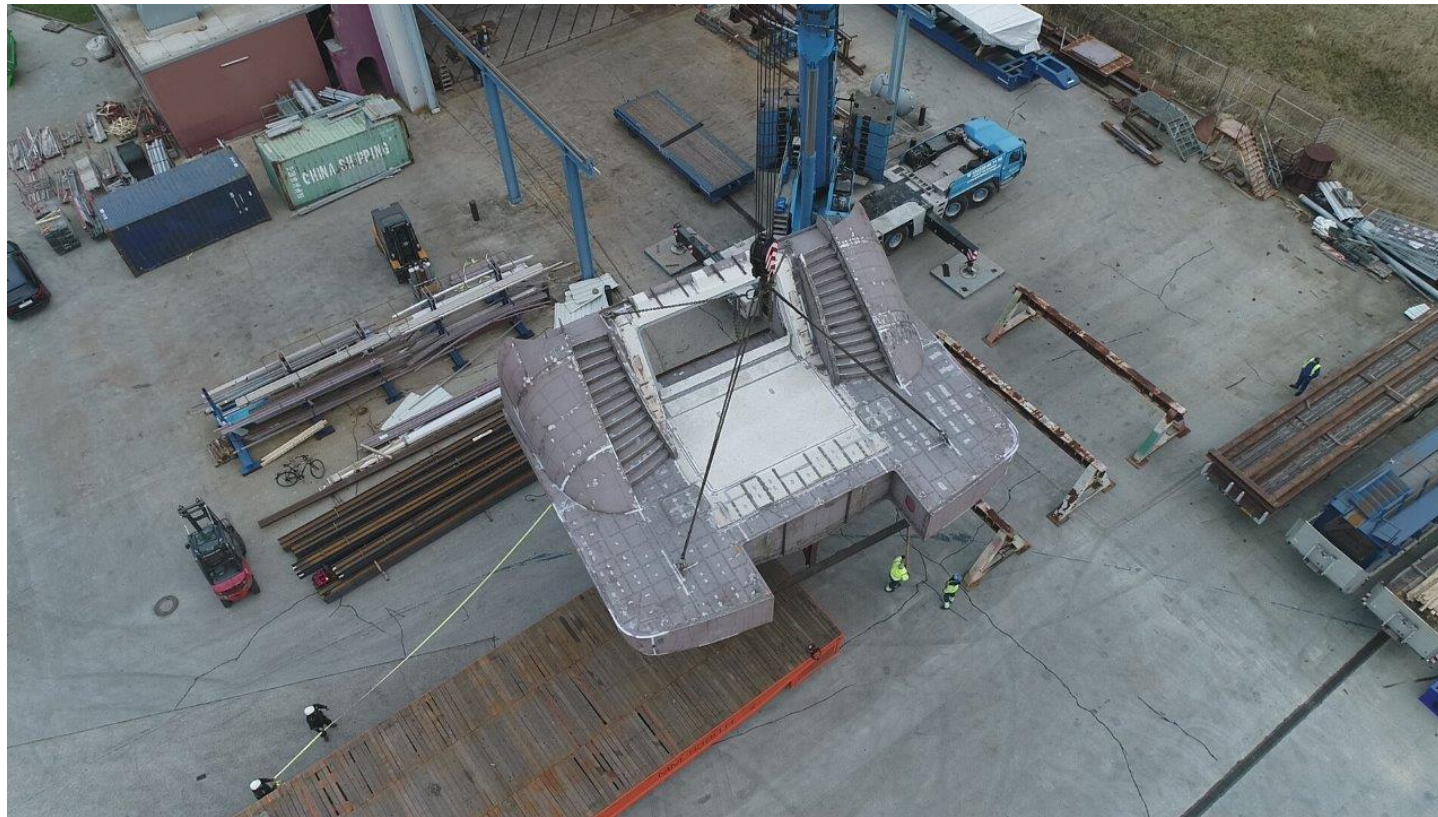
- 15+ years experience, 140+ shell doors modules delivered
- Projects: superyachts, cruise vessels, naval, government
- All core competences in-house: engineering, welding, controls, installation & commissioning, after sales



OSTSEE MARINE
DOORS & HATCHES

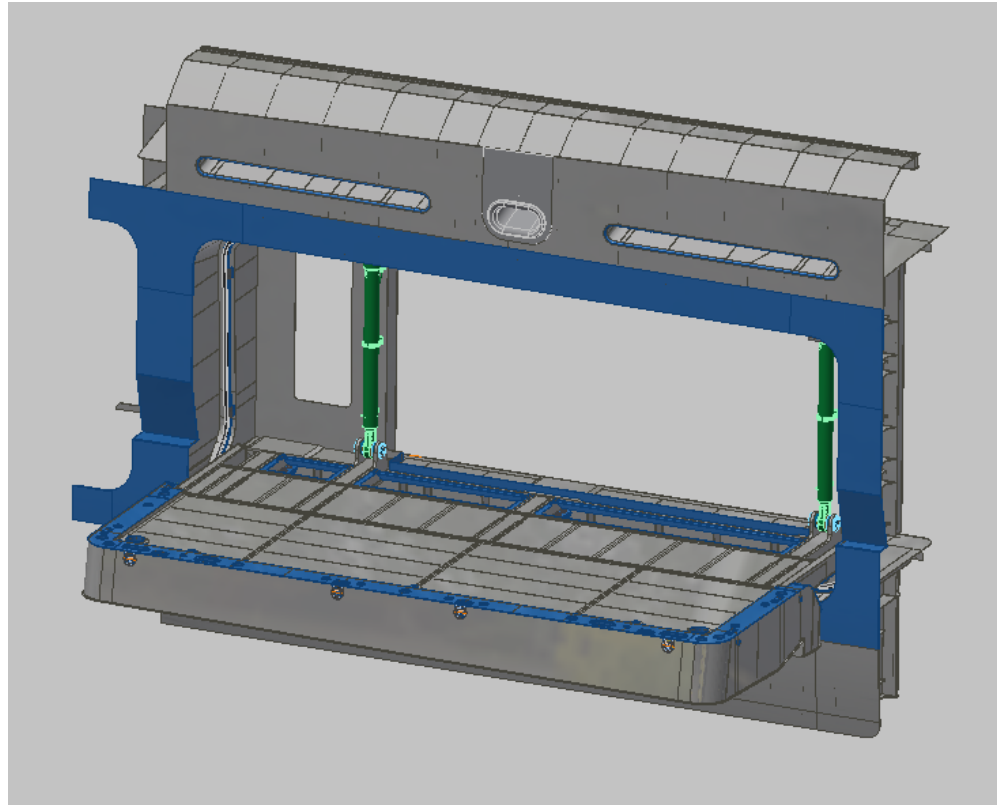
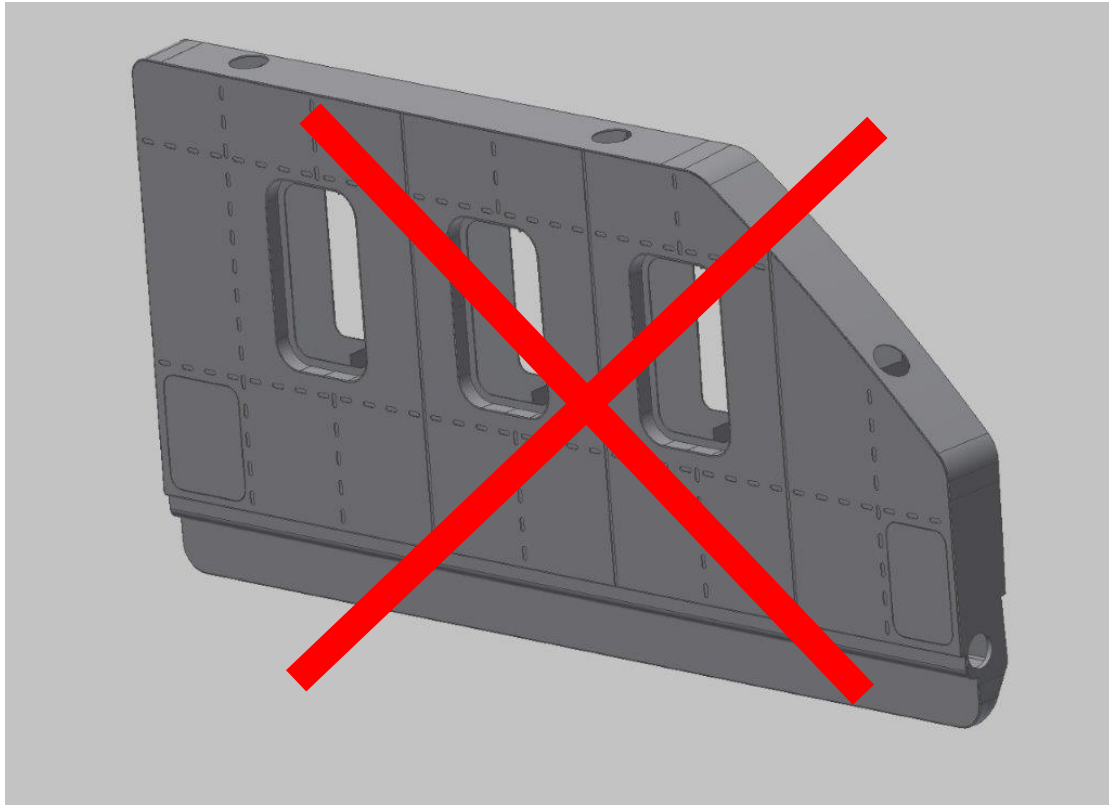
OMS Expertise (2)

Our sister company Ostseestaal can build vessel sections with the OMS shell doors already integrated.



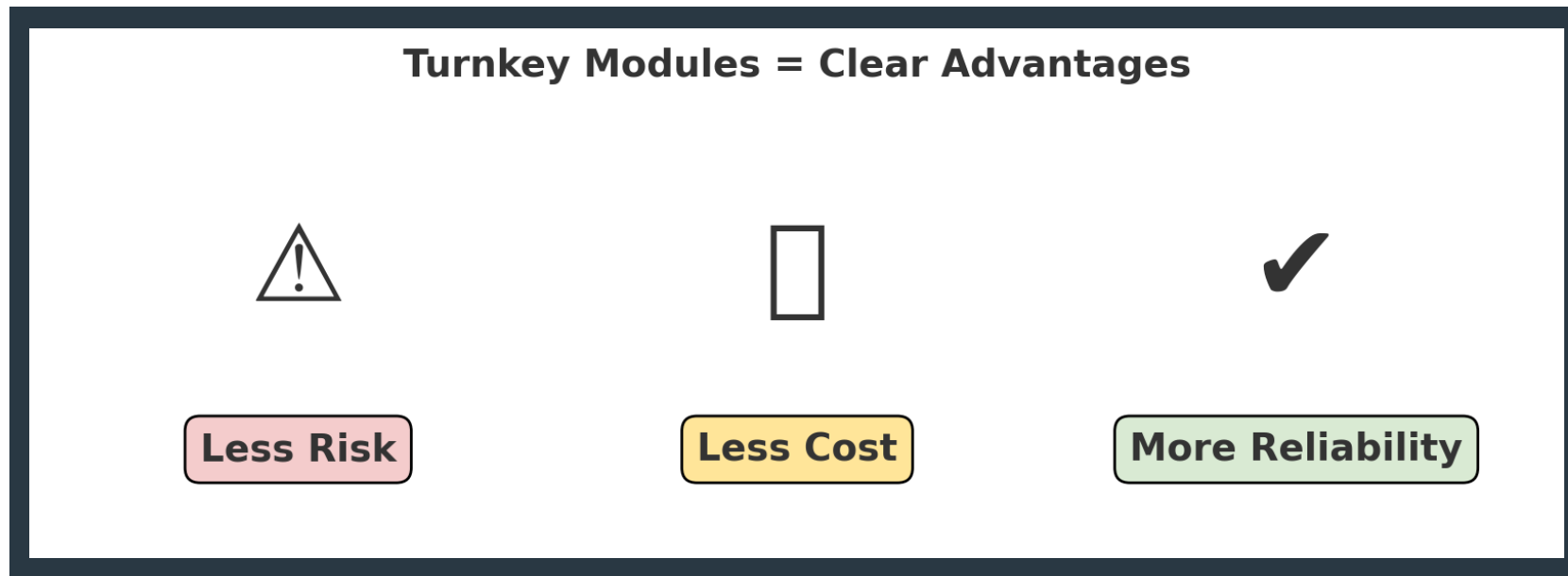
Traditional vs. Integrated Approach

- Traditional: door + hydraulics + controls -> different suppliers
- Integrated: complete door module incl. frame, hydraulics & controls
- Result: fewer interfaces -> fewer risks

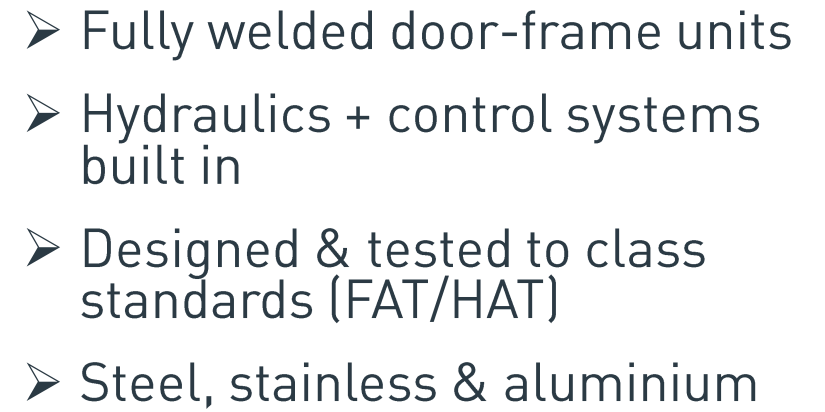


Advantages of Integrated Modules

- Less interfaces → fewer failure points
- Faster installation at yard
- Pre-tested in factory → reliable commissioning

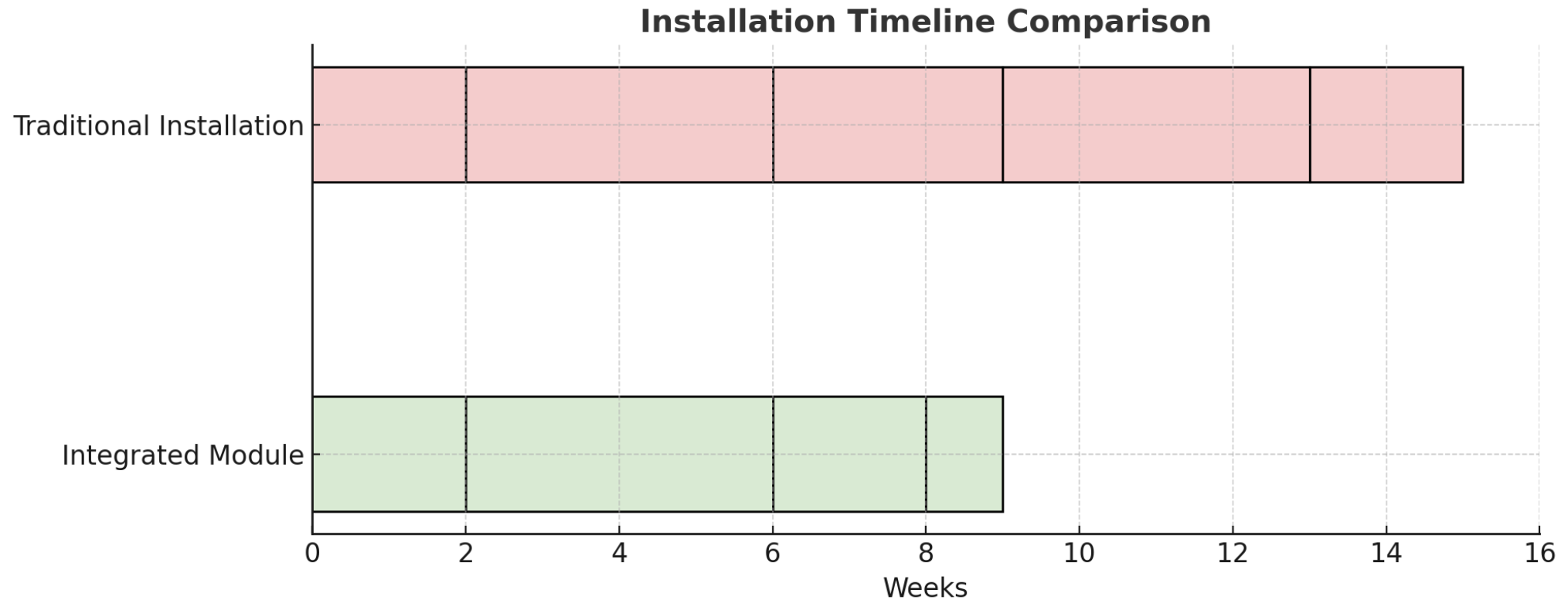


OSTSEE MARINE
DOORS & HATCHES



Installation & Yard Benefits

- “Plug-and-weld” concept → saves weeks
- Predictable installation time & cost
- Reduced man-hours and supervision for shipyard



Operational Advantages (Owners/Operators)

- Higher reliability → fewer service outages
- Extended service intervals → lower Opex
- Flawless performance + seamless aesthetics



Applications

- Super & Megayachts (sea terraces, tender doors, stern doors, mooring flaps, crew doors, balconies)
- Navy vessels (tender doors, stealth doors, heli hangar doors)
- Special vessels (government, research, offshore, cruise)



References & Track Record

- Over 30 vessels equipped
- Door modules up to 18 x 5m / 35 tons
- Proven track record → on-time & on-quality delivery



ABEKING & RASMUSSEN

DÖRRIES  YACHTS
Made in Germany

LÜRSSEN

LÜRSSEN

LÜRSSEN-KRÖGER WERFT



NOBISKRUG

Summary / Key Message

- Turnkey modules = less risk, less cost, more reliability
- Faster installation, fewer headaches for yards
- OMS: your proven partner for high-spec vessel applications



Contacts

Andreas Wagner

General Manager

Phone

+49 178 214 948

E-Mail

contact@ostseemarine-solutions.com

An der Werft 17 | 18439 Stralsund | Germany | www.ostseemarine-solutions.com

OSTSEE MARINE
DOORS & HATCHES



Σας ευχαριστώ για την
προσοχή σας!

Thank you for your attention!

