

# Family-owned engineering since 1876

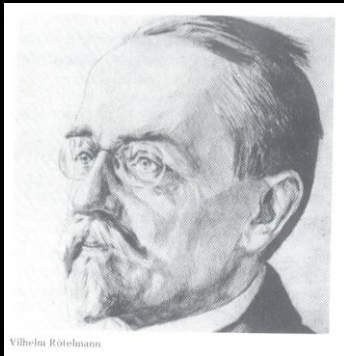


**Precision valves that keep industry flowing.**  
**Quality · Reliability · Traceability**



# Innovation in our DNA

**149 years of progress, distilled into four game-changers.**



**1876**

**Founding in Werdohl:**  
Forging tools (anvil, hammer, pliers, forge) for the Ruhr steel boom.



**1963**

**First hydraulic ball valve:**  
Pioneered compact shut-off for underground mining - still industry standard.



**1980**

**CAD & CNC adoption:**  
Early digitisation slashed lead-times by 40 %.



**2025**

**Digital-twin rollout:**  
Every valve shipped with a cloud-linked QA dataset for instant audit.

► **From blacksmith shop → digital twin factory**

# Your industry, our expertise



## Some of our markets:



**Shipbuilding & Marine**  
DNV/ABS  
type-approved valves  
down to -55 °C



**Offshore Energy**  
Duplex/Super-Duplex  
bodies, 25-year  
seawater life-cycle



**Construction Machinery**  
Integrated safety blocks  
reduce hose count by  
40 %, tested to 420 bar  
cyclic



**Defence Technology**  
NATO-STANAG  
compliant materials,  
shock & vibration tested  
to MIL-STD-810



**Automotive**  
Lean-manufactured  
valve blocks with  
0 ppm defect target,  
JIT delivery

- ▶ Proven performance across the most demanding sectors.
- ▶ **Hydraulics · Shipbuilding · Offshore · Hydrogen · Heavy Industry · Automotive · Defence Construction Machinery · Wind Mills · Agriculture Industry · Paints and Coatings**



# Your seasoned guide



**145 years of engineering confidence.**  
**Certified · Proven · Family-owned**



Shut-off and control technology

# What you get, in a sentence

**Certified precision valves for  
high-pressure application**

**standard or bespoke -  
delivered fast and  
fully traceable,**

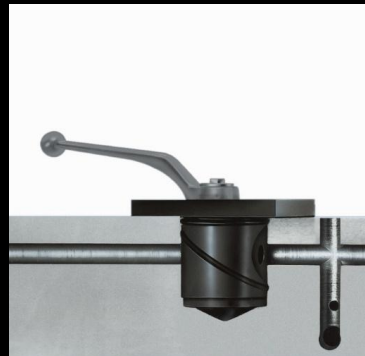
**so your production line  
never waits.**



# The portfolio ...



2-way ball valves  
with threaded  
connection



2-way cartridge  
ball valves



3-way ball valves  
with floating ball



2-way ball valves  
with flange  
connection

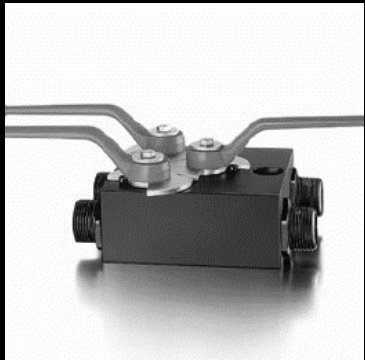


2-way plate-  
mounted ball valves

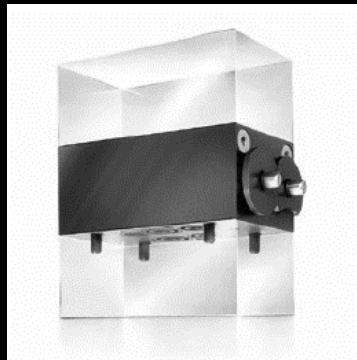
**2-, 3-, and multi-way valves with floating or trunnion balls, cartridge inserts, safety blocks – every variant configurable.**

**Exotic materials? We machine Hastelloy, Inconel, duplex, aluminium-bronze – certified material certs stored for 30 years. Manifolds, hydraulic logic and complete sub-systems delivered fully assembled and pressure-tested.**

# ... Quality you can measure – literally



Cylinder shut-off  
blocks



Sandwich panels



Hydraulic drives



Accumulator safety  
blocks

**Every housing is laser-etched with its heat number for lifetime traceability.**

- 15-axis CNC transfer lines keep tolerances  $\leq 10 \mu\text{m}$  and shorten lead-times by 42 %.
- 3D-CMM inspection logs are archived and shared on request – transparency by default.

# Applications of Ball Valves in Ships:

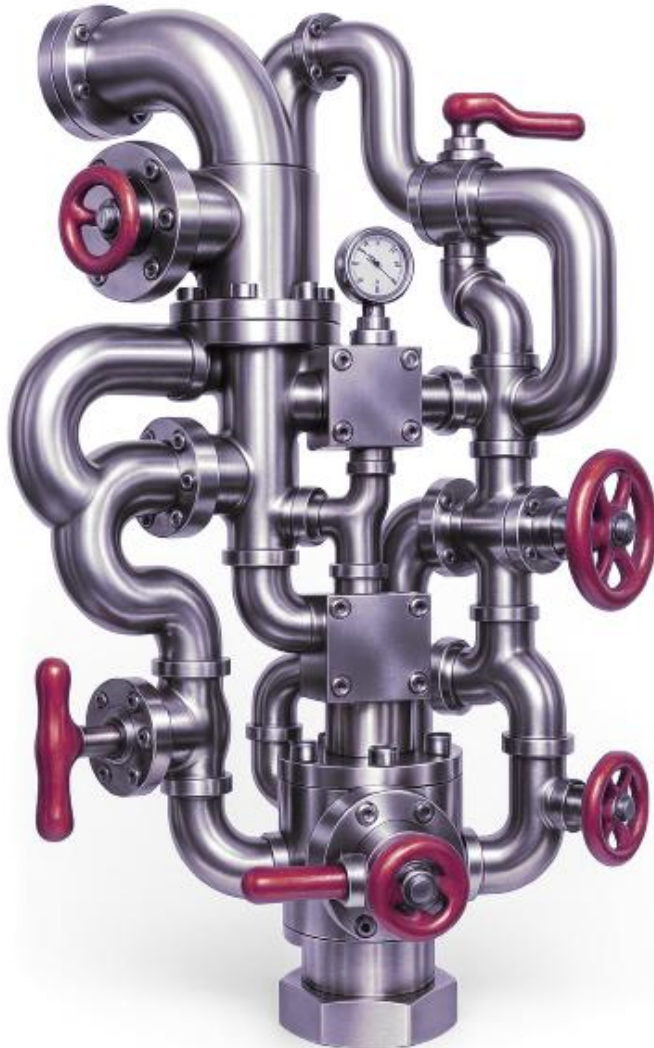
- ⚙️ Fuel and lubricating oil systems
- 💧 Ballast water system for stability control
- 🔥 Cooling water systems (seawater and freshwater cooling)
- 🚒 Fire extinguishing and fire protection systems
- 🚰 Bilge Water Systems and Sewage Systems (Abwassersysteme)
- 🔧 Hydraulic systems, e.g., for steering gear, winches, bow thrusters
- 🌀 Compressed air systems, starting air systems, control air systems  
Druckluftsysteme, Startluftsysteme, Steuerluftanlagen
- ⚙️ Onboard chemical systems and fresh water systems





# Beyond the Catalogue

Complicated  
requirements?



Our special  
**Applications!**

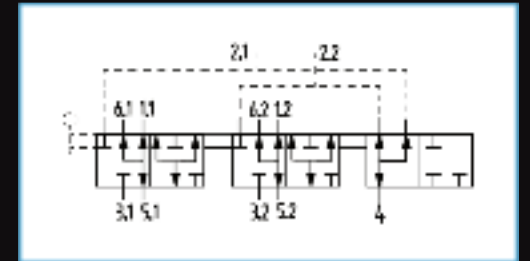


# Your 3-step path to stress-free supply

**1 | CO-DESIGN – A 30-min digital workshop turns your spec into a 3D model the same day.**

**2 | AGILE MANUFACTURING – Flexible lot sizes from 1 to 20 000, with lead-times starting at 5 days.**

**3 | LIFETIME SUPPORT – Training, spares, and failure-analysis service ensure your equipment keeps earning.**



# When “standard” is not enough

**Custom-engineered valves that fit your envelope, medium & mission.**

**LNG bunkering safety** → Double-Block -&-Bleed to ISO 16904, 100 % helium tight, ABS-approved

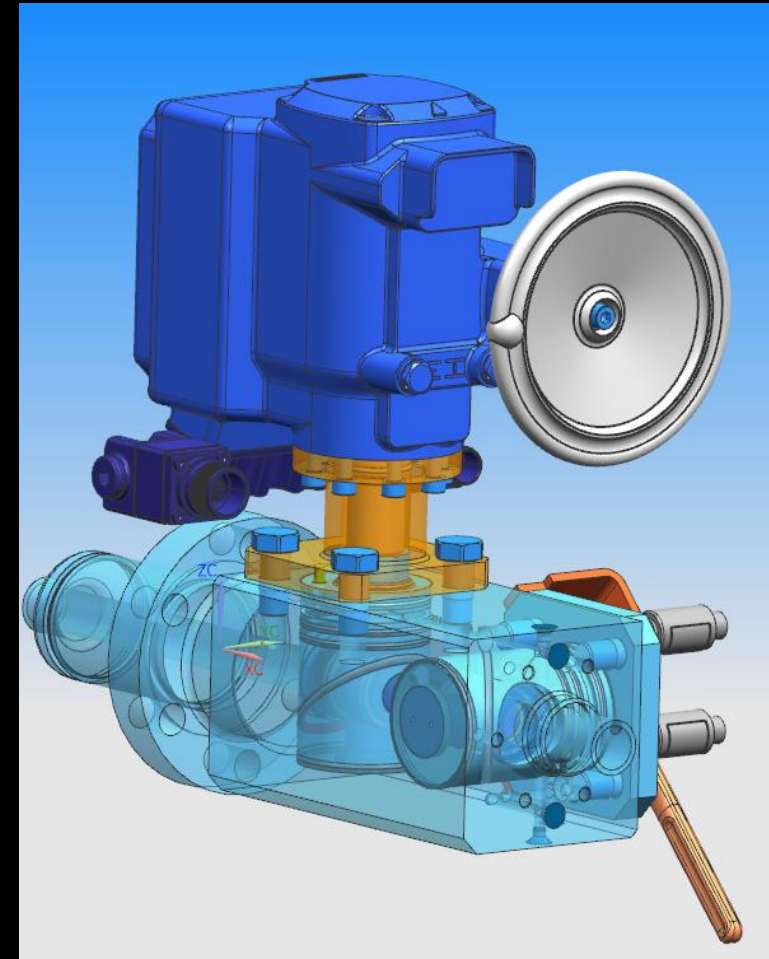
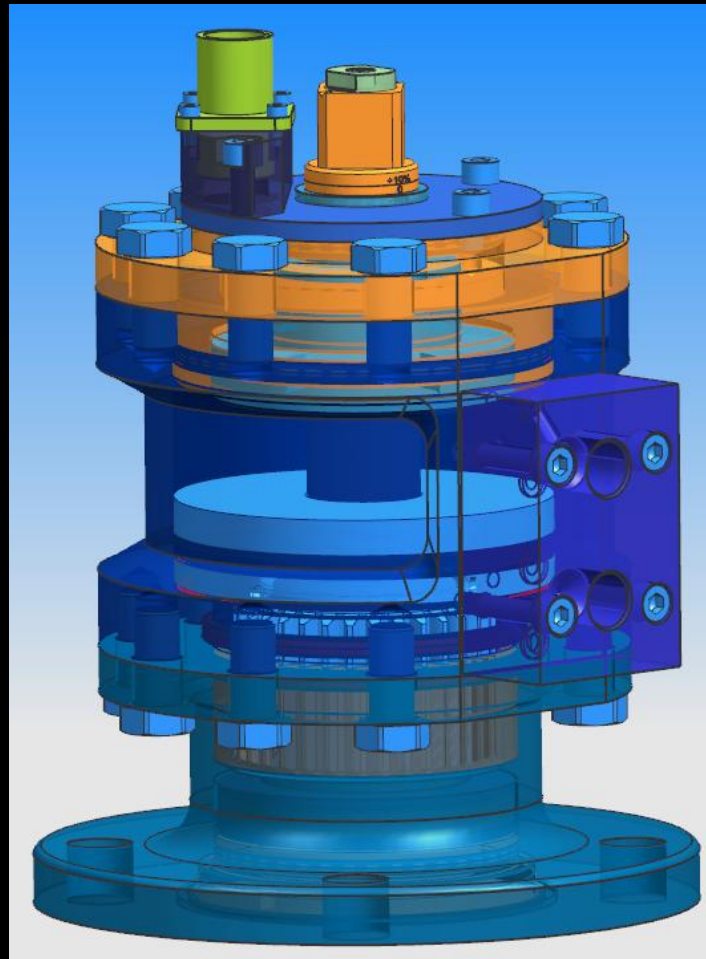
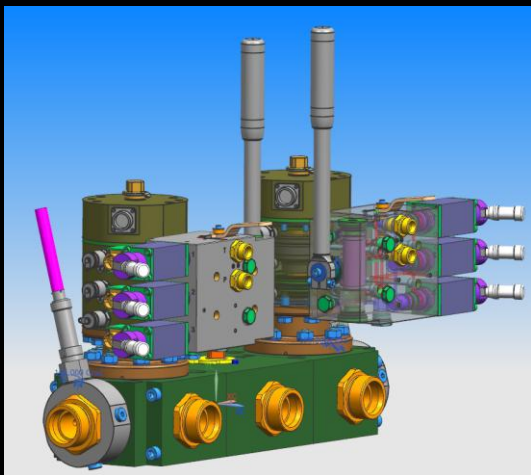
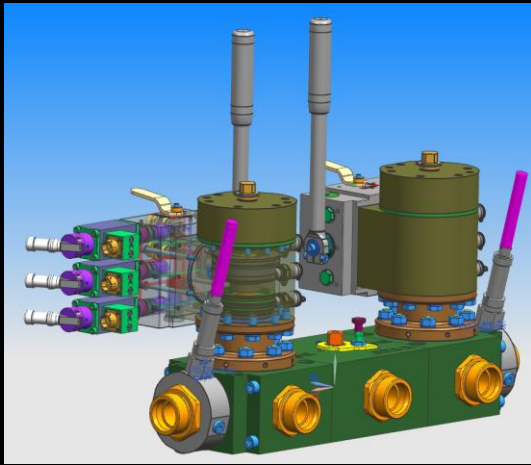
**Space-saving piping** → Integrated manifold blocks with check & flow control, 40 % fewer leak paths

**Corrosive / H<sub>2</sub> service** → Duplex, Hastelloy, Inconel or Monel bodies, 10 000-cycle sour-gas test passed

**Arctic operation** → Cryo-rated PEEK + PTFE seats, seal integrity down to -55 °C

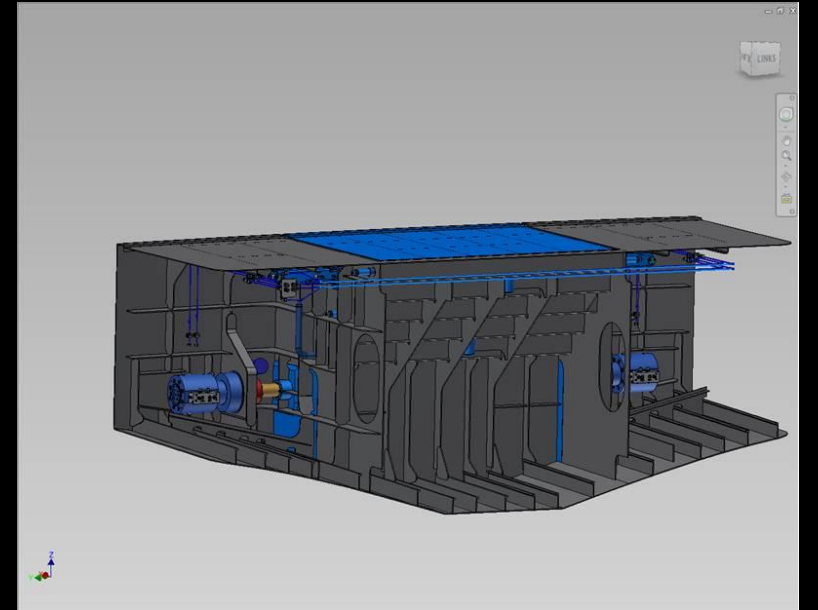
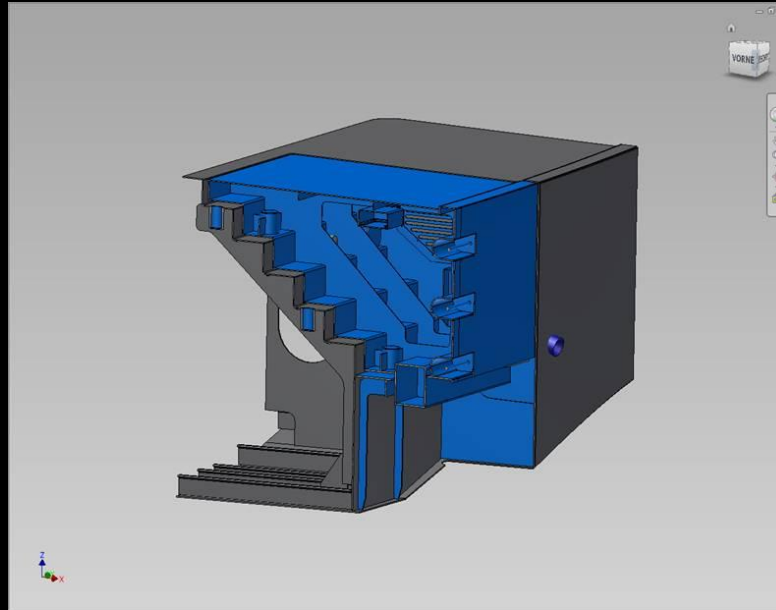
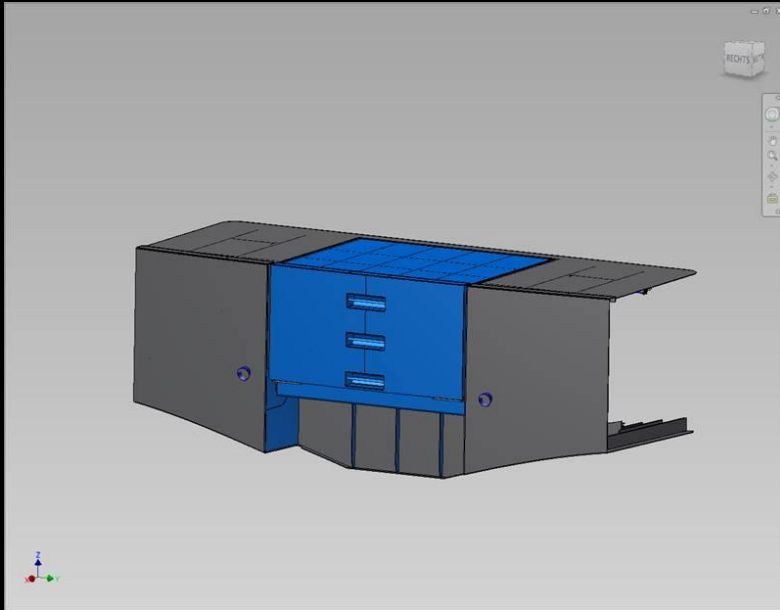


# Take a Look





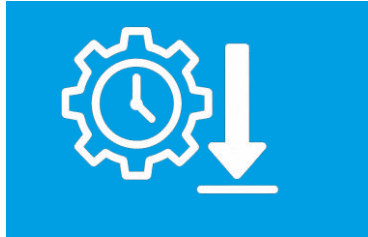
# Take a Look





# The cost of failure

**One faulty valve can stall production and sink reputations.**



Downtime



Delays



Damaged trust

# Proof you can trust

## Built-in quality. Proven in the field.



**0.02 % warranty  
claim rate**  
(10-year rolling average)



**1.5 × design pressure**  
test on every housing;  
reports archived  
30 years



**Digital twin &  
3D-CMM logs**  
available on demand,  
instant audit trail

# Let's start

**Our ball valves can handle any pressure –  
except the pressure of listening to a long speech.**

**So I will keep it short: Tight is right!**

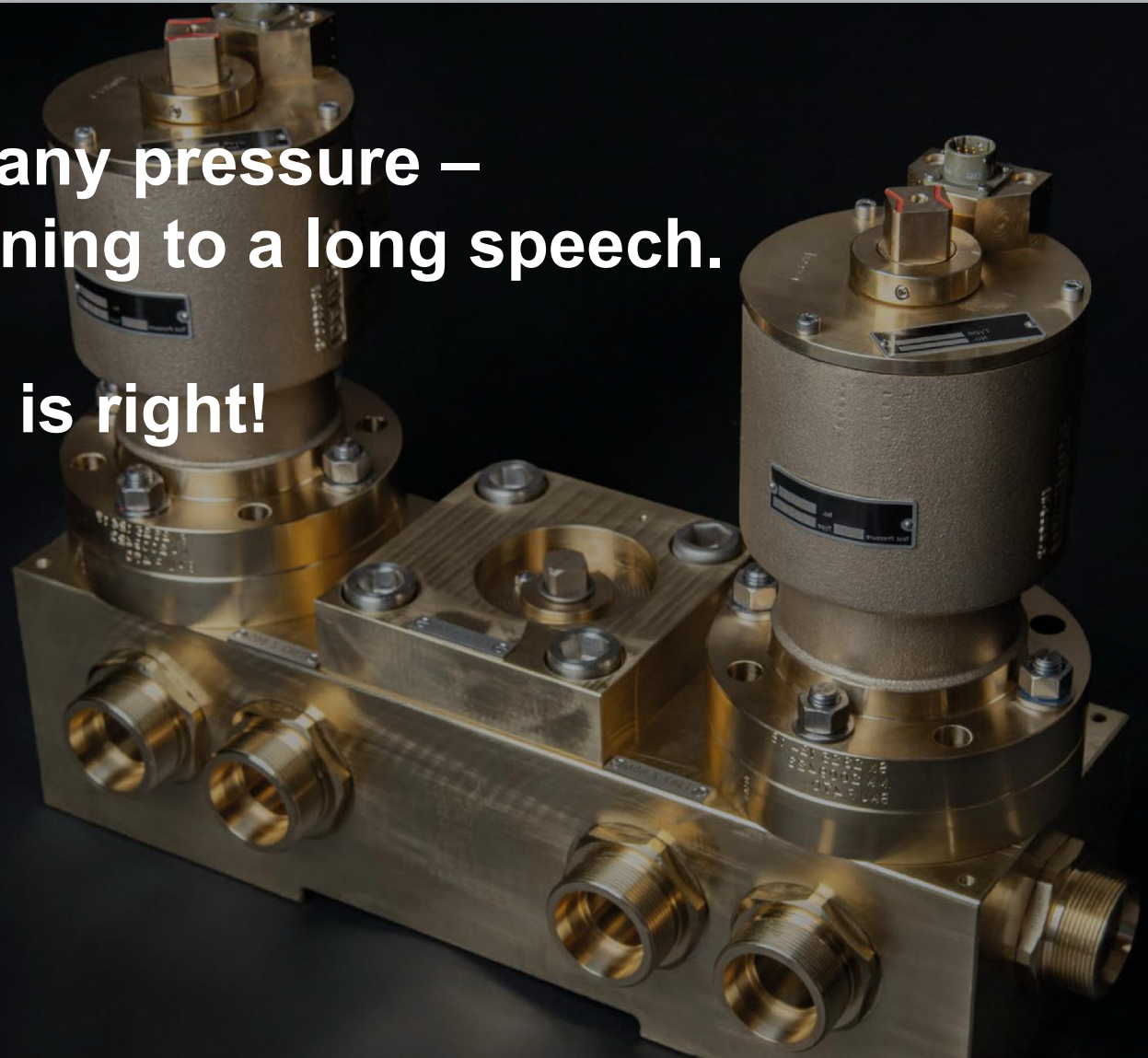
**Thank you for listening.**

**Rötelmann GmbH**

In der Lacke 10 · 58791 Werdohl · Germany

Phone +49 2392 9191-0 · Fax +49 2392 9191-14

info@roetelmann.de · www.roetelmann.de



# Let's start



Shut-off and control technology

**Your direct route to the best solutions.**  
**With Rötelmann by your side.**

**Rötelmann GmbH**

In der Lacke 10 · 58791 Werdohl · Germany

Phone +49 2392 9191-0 · Fax +49 2392 9191-14

info@roetelmann.de · www.roetelmann.de

